

US Product Quality and Compliance Manual

I. Introduction

At Walmart and Sam's Club, we are committed to providing our customers and members with safe and affordable merchandise. This commitment is consistent with our company's four basic beliefs:

- **Service to the Customer**
- **Respect for the Individual**
- **Strive for Excellence**
- **Act with Integrity**

Service to the Customer means we listen to, anticipate and serve customers' wants and needs. **Respect for the Individual** translates to meeting our customers' expectations; safe and compliant product reflecting the best value. We **Strive for Excellence** by not simply meeting but exceeding our customers' expectations. Lastly, we **Act with Integrity** by working diligently to be the most trusted retailer.

As a supplier to Walmart, Inc. ("Walmart"), we expect you to be our partner in delivering products that meet our commitment. One way we do this is by requiring our suppliers to meet all applicable federal, state, and local laws and Walmart-specific requirements for all items offered for sale. Additionally, we expect our private brand suppliers to hold their supply chains to the same rigorous standards to which we hold you. To facilitate your compliance, this manual was created to provide a consolidated source for Walmart product testing requirements and expectations.

Be assured that Walmart will not retaliate against suppliers who, in good faith, raise legal, ethical, or compliance concerns. In fact, failure to report a violation could jeopardize your relationship with Walmart. If you become aware that any of your products violate or fail to meet any regulatory standards or Walmart-specific requirements, you must inform Walmart immediately. You can report violations regarding the product itself by completing a Product Removal Form on Retail Link or by sending an e-mail to GMComply@walmart.com.

In addition, suppliers are expected to avoid undue influence or any attempt to persuade, pressure, suggest, or instruct any employee of a third-party laboratory to withhold or change safety or regulatory test results per 16 CFR 1107.24. Violations can be reported through the [Walmart Global Ethics](#) website.

This manual, and the specific requirements outlined herein, apply to suppliers of Walmart Stores and Sam's Club located in the United States and Puerto Rico only, and to Walmart.com and Samsclub.com. The use of the term "Walmart" in this manual includes; Walmart Stores, Sam's Clubs and Dotcom (Walmart.com and Samsclub.com). The scope of this manual does not include food, dietary supplements, drugs, alcohol, tobacco or firearms.

Walmart does not provide legal advice to suppliers. Suppliers should seek their own legal counsel to ensure compliance with all laws and regulations applicable to their products.

Complete the checklist below for each item you are supplying to Walmart or Sam's Club in order to successfully complete the Testing Program.

General Testing Program		
General Merchandise and Consumables Suppliers for Walmart and Sam's Club, check all boxes below		
	Yes	N/A
Review Testing Process Stakeholders	<input type="checkbox"/>	<input type="checkbox"/>
Review General Testing Process Flow	<input type="checkbox"/>	<input type="checkbox"/>
Determine your Brand Type, Supplier Designation, Testing Cycle	<input type="checkbox"/>	<input type="checkbox"/>
Understand Product Modifications that require new testing	<input type="checkbox"/>	<input type="checkbox"/>
Determine the assigned test labs <small>(Internal Link)</small> for your products <i>Note: Suppliers are required to use the same physical lab location for all pre-production, initial production and re-testing</i>	<input type="checkbox"/>	<input type="checkbox"/>
Complete Test Request Form (TRF) provided by selected Third Party Testing Laboratory	<input type="checkbox"/>	<input type="checkbox"/>
Schedule Production Sample Sealing <small>(Internal Link)</small> for Direct Import products	<input type="checkbox"/>	<input type="checkbox"/>
Submit samples to laboratory <i>Note: Laboratory will advise sample submission quantity</i>	<input type="checkbox"/>	<input type="checkbox"/>
Obtain passed Pre-Production report <i>*failed result, see Failure Management Program</i>	<input type="checkbox"/>	<input type="checkbox"/>
Obtain passed Production report <i>*failed result, see Failure Management Program</i>	<input type="checkbox"/>	<input type="checkbox"/>
Review Product Removal Guidelines	<input type="checkbox"/>	<input type="checkbox"/>
Product Safety & Compliance Program		
General Merchandise and Consumables Suppliers for Walmart and Sam's Club, check all boxes below		
Determine regulatory compliance testing requirements applicable to your product <i>*Product Safety & Compliance Directives <small>(Internal Link)</small> & Protocols <small>(Internal Link)</small></i>	<input type="checkbox"/>	<input type="checkbox"/>
Review Non-Private Brand Testing Program	<input type="checkbox"/>	<input type="checkbox"/>
Register with GRS (Global Registration Services)	<input type="checkbox"/>	<input type="checkbox"/>
Register with WERCS (Worldwide Environmental & Regulatory Compliance Systems)	<input type="checkbox"/>	<input type="checkbox"/>
Review Document Acceptance List (DAL) and provide supporting documentation	<input type="checkbox"/>	<input type="checkbox"/>
Supply a Letter of Guarantee (LOG)	<input type="checkbox"/>	<input type="checkbox"/>
For online ONLY items, contact the eCommerce Compliance Team for testing requirements	<input type="checkbox"/>	<input type="checkbox"/>
Walmart Quality Programs		
General Merchandise and Consumables Suppliers for Walmart and Sam's Club check all boxes under your product category		
• General Merchandise Products		
Determine all testing requirements applicable to your product. <i>* General Merchandise Performance Protocol Manual <small>(Internal Link)</small></i>	<input type="checkbox"/>	<input type="checkbox"/>
Review In-Store Performance Testing program.	<input type="checkbox"/>	<input type="checkbox"/>
Review RIST and SKPPT programs.	<input type="checkbox"/>	<input type="checkbox"/>
Provide Bill of Materials/Product Specification for Private Brand item	<input type="checkbox"/>	<input type="checkbox"/>
Complete Aesthetic Review and Color Approval Samples (Appendix A)	<input type="checkbox"/>	<input type="checkbox"/>
• Apparel Products		
Review the Apparel, Accessories, Footwear and Jewelry Manuals & Tools Folder <small>(Internal Link)</small>	<input type="checkbox"/>	<input type="checkbox"/>
• Online Exclusive Products		
Review Walmart.com Online Exclusive Product Approval Process	<input type="checkbox"/>	<input type="checkbox"/>
• Consumables Products		
Contact Walmart Consumables Team for testing requirements	<input type="checkbox"/>	<input type="checkbox"/>
• Sam's Club Products		
Contact Sam's Club Quality Team for testing requirements	<input type="checkbox"/>	<input type="checkbox"/>

II. Stakeholders

A. Walmart Product Safety and Compliance (PSC)

This team is responsible for compliance with legislation and regulations. It achieves this through, among other things, establishing and monitoring the testing compliance program and overseeing recalls and product withdrawals.

- Walmart US & Sam's Club
 - Contact: GMComply@walmart.com
- Walmart.com, SamsClub.com and their subsidiaries
 - Contact: CompliaGeC@walmart.com

B. Walmart Quality Departments

These teams are responsible for product performance standards, specifications and performance testing.

- Walmart Apparel Quality and Technical Team
 - Contact: Michael.O'Connor@walmart.com
- Walmart General Merchandise Quality and Technical Team
 - Contact: gmtechnical@walmart.com
- Walmart Consumables
 - Contact: Yayu.Pai@walmart.com
- Sam's Club Quality Team
 - Contact: Lensey.Gulledge@samsclub.com

C. Third-Party Laboratories

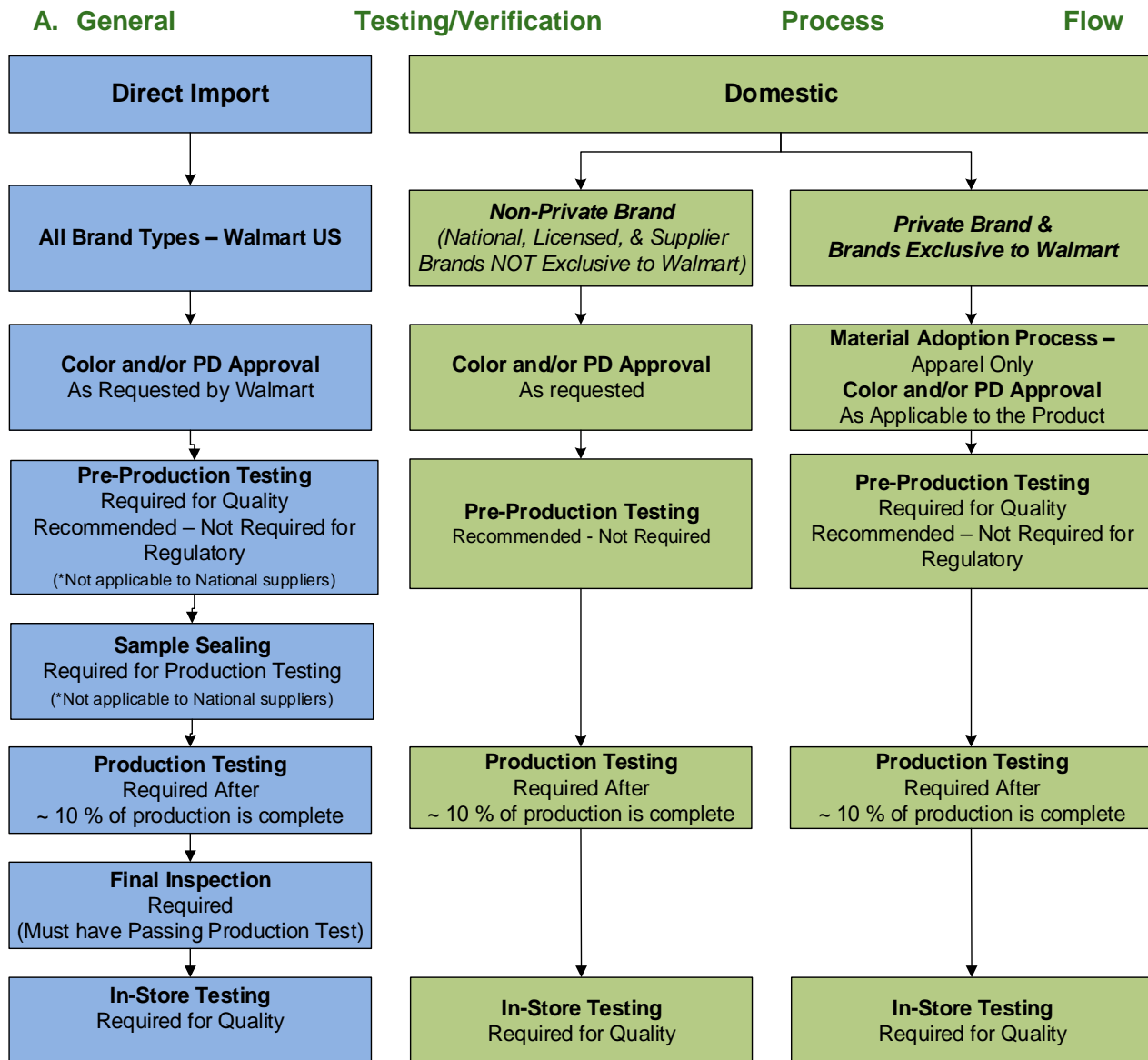
The third-party laboratories perform safety, performance, regulatory and quality testing/verification for products sold by Walmart.

D. Suppliers

These companies manufacture and sell products to Walmart.

[CONTINUED ON NEXT PAGE]

III. General Testing Program Overview (** Not applicable to Online Exclusive Items)



B. Brand Types and Supplier Designations

- **Non-Private Brand:** Brands that are supplier brands or national brands. Suppliers own the product and label, which is well-recognized within the product category, and manage their business domestically with buyer.
- **Private Brand:** Brands exclusive to Walmart, including products labeled as “Marketed or Distributed by Walmart”.
- **Domestic Import:** Supplier is the importer of record.
- **Direct Import:** Walmart is the importer of record.

C. Testing Cycles

- **Initial** – First time item is to be sold by Walmart
 - Pre-production - Submitted samples should be constructed in the same manner as production samples and submitted as far ahead of production as possible to ensure

any problems identified can be corrected before production begins.
Packaging/labeling is optional.

- Production - Samples must be taken from actual production lots and be representative of what will be sold in all retail formats. Packaging/labeling is required.

Note: Pre-production and production samples must be submitted separately for each factory and any new factory that may be contracted for item production.

- **Annual** - This is designed for goods that will be sold by Walmart for more than one year. Product Safety & Compliance requirements are to be tested on an annual basis for as long as the item is sold by Walmart. Performance and quality requirements are not required to be evaluated at the time of annual testing.
- **In-store/Quality Monitoring Program (QMP)** - Product is procured from retail store level and tested for performance and quality requirements at designated third party laboratories. Product Safety & Compliance requirements are typically not included in these tests, although they may be at the discretion of PSC.
- **Material Adoption Process (MAP)** – Process to ensure fabric being used by suppliers is to standard. This is required by the Walmart textile team prior to the purchase of the fabric.
- **Color/Aesthetic approval** – Process by which Walmart Product Development will approve a submitted physical swatch of production material.

D. Product Modifications

- **Material/factory change:** Any time an item undergoes a material or factory change, the item must be submitted for full testing.
- **UPC change:** If a product or product package is altered due to any of the following reasons, a new UPC number **MUST** be assigned to the altered product:
 - Regulatory change
 - Law (enacted or pending)
 - Standard enactment or revision (i.e. ANSI, ASTM, UL, Walmart US Compliance Requirement, etc.)
 - Ruling or clarification of a ruling from any governing body (i.e. CPSC, FTC, FDA, etc.)
 - Packaging – Change in product size or package statement of size affecting how product would be regulated (i.e. adding 20% more product to the container of a product that has regulated size limit in some areas)
 - Design change
 - Changes made due to patent or trademark infringement or alleged infringement
 - Formulation changes, change of color or core composition of a product
 - Material changes, including the sourcing of component parts
 - Proactive changes to product due to a safety issue

- Product Removals
 - All products that have been subjected to a safety recall or withdrawal must have a new UPC assigned regardless if the removal was for specific date codes or lot numbers.
 - Changes because competitor's similar product has been recalled and your product has the same feature or component.
- Additional –
 - Adding or removing marks obtained through certifying bodies (i.e. Juvenile Products Manufacturers Association Certification [JPMA], Carpet and Rug Institute Seal of Approval [CRI], etc.)
 - Addition to a product (i.e. gift with purchase, bonus item, or any time an item is added that would be held to different laws or standards than the original product)
 - Whenever a need arises to differentiate old product from new product for reasons other than quality
- **Packaging change:** If product packaging, but not the product, is substantially altered, only the package must be submitted for retesting.

E. Sample Submission

Please contact the test labs directly for the quantity of samples required. The test labs will not test until all required samples are received.

Suppliers may see savings through grouping of items. Items with the same fit, form, and function that were manufactured in the same factory may in some cases be grouped or consolidated for testing. Most suitable differences are either size or color of the product. Please contact the test lab for information on consolidation of samples. Items grouped together during Pre-Production and Production Testing will also be grouped during In-Store testing.

NOTE: Samples must be submitted at the same time, in a “group”. Labs will not hold items that are sent in separately.

F. Failure Management Program

If a sample fails to meet requirements at any phase of testing/verification, the supplier is responsible for correcting the deficiency or non-conformity and submitting a corrected sample for retesting/verification with the completed Corrective Action Plan (CAP) form provided by the third-party laboratory.

The CAP must be approved before submitting the corrected product for retest. The table below identifies the required source of CAP approval based on the sourcing of the product:

Product Sourcing	Required Source of CAP Approval
Direct Import	Appropriate Merchandise Quality Engineer (MQE)
Domestic	Walmart-Approved third-party laboratory

Retest due to failure: A maximum of two retests will be allowed if the pre-production sample fails testing. A maximum of one retest will be allowed if the production sample fails testing. Any additional retests must be approved by the technical team. The retest sample must be submitted within 3 months of the failed report.

G. Product Removal

Occasionally, a product is identified that does not meet regulatory, legal, or quality requirements. When this occurs, Walmart removes the item from stores, clubs, distribution centers (DC), and online through a multi-team process initiated by the Retail Link Product Removal process. For more information, please reference the guide found on Retail Link by following the path below:

Retail Link->Docs->Product Removal Supplier Process Guide->Product Removal Help

Domestic suppliers are also obligated to register with the Consumer Product Safety Information Database, www.saferproducts.gov, to ensure that reports of harm submitted by consumers regarding any of their products are received.

IV. Product Safety & Compliance Program

The information in this section relates only to regulatory requirements. Subsequent sections provide information related to quality requirements.

A. Non-Private Brand Product Testing/Verification Program:

Non-Private brand products may be subject to product safety and compliance requirements by multiple retailers. To minimize duplicative testing, suppliers of **domestically sourced non-private brand products** AND **direct import non-private brand products sold exclusively online** may submit samples with a passing third-party test report to their Walmart assigned lab in lieu of testing/verification for regulatory requirements not listed on the Document Acceptance List, using the following guidelines:

- The test report must be dated within the past twelve months and issued by a CPSC accepted lab (<https://www.cpsc.gov/cgi-bin/labsearch/>)
- The test report must reflect testing/verification for the exact product sold to Walmart.
- The test report must include the date, item identification; testing/verification performed and designated passing result for the applicable requirement(s).

The Walmart assigned third-party laboratory will review the test report against the product testing/verification protocols and will test only to those requirements not covered by the submitted test report.

This program cannot be utilized to satisfy Walmart or Sam's Club quality testing program requirements and is not an option for private brand or direct import products.

B. Global Registration Services (GRS)

Walmart uses the Vendor Watch program through GRS to verify and monitor the compliance status of registered licenses. Suppliers selling any type of product that is **stuffed or upholstered** must create an account with GRS and subscribe to the Vendor Certification service in order to register the necessary state licenses for their stuffed and/or upholstered articles.

The GRS website and all relevant information can be accessed at the following link: <http://www.globalrsinc.com>.

C. Worldwide Environmental & Regulatory Compliance Systems (WERCS)

For products that contain any type of **chemical, aerosol, or pesticide**, and for products that contain **batteries with lithium or lead**, suppliers are required to complete the

Chemical Assessment Review Process by submitting formulation information to the WERCS.

Access the following site for additional information: <https://secure.supplierwercs.com/> or call WERCS directly at (518)720-6220.

D. Consumer Product Safety Commission (CPSC) Regulatory Robot

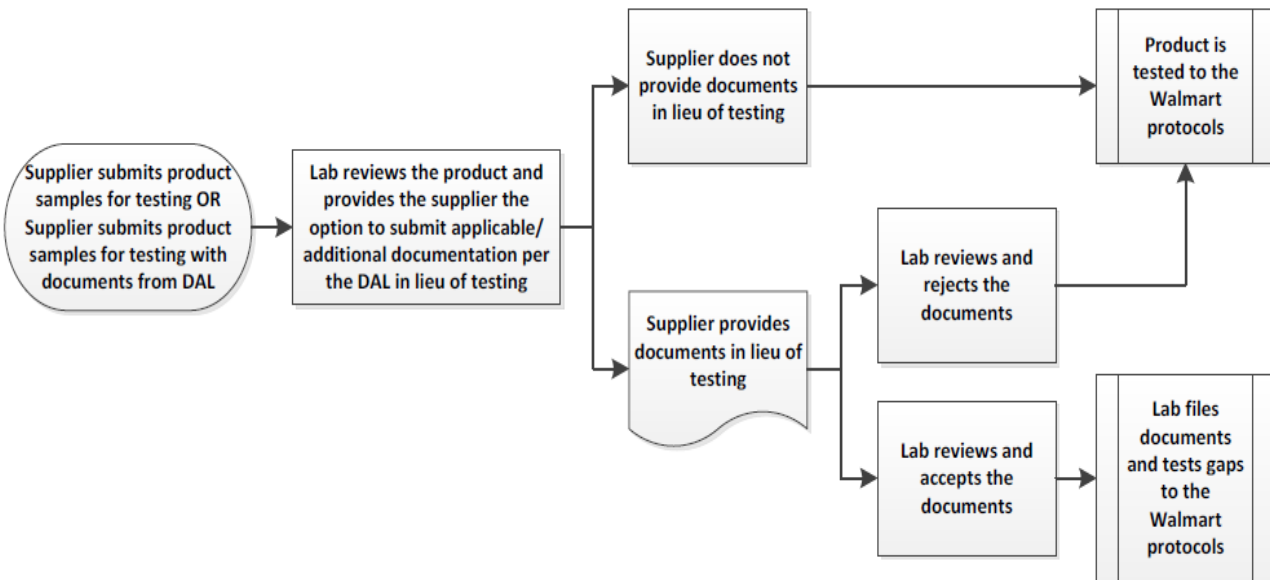
The Consumer Product Safety Commission (CPSC)'s Regulatory Robot is an online tool which can help suppliers determine what US safety requirements apply to specific consumer products. The Robot uses input provided by the individual user to identify important product safety requirements which should be reviewed before manufacturing or importing consumer product. The Robot is not intended as legal advice, nor does it replace or supersede a manufacturer's obligations to comply with all applicable CPSC requirements. Be aware this link may not include requirements which Walmart Inc. has chosen to adopt and are reflected in the protocols and directives which can be accessed through Retail Link.

The CPSC Robot is available at <https://business.cpsc.gov> . The Robot is mobile-friendly and available in English and Chinese, and partially available in Spanish, Vietnamese, and Indonesian.

[CONTINUED ON NEXT PAGE]

E. Document Acceptance List

The [Document Acceptance List \(Internal Link\)](#) (DAL) outlines when prior third-party test reports or documentation can be accepted by the Walmart-assigned third-party laboratories in lieu of conducting physical and/or chemical tests.



The DAL contains 3 columns of information:

Test	Citation	Documentation Accepted
The requirement or law to which the document must relate	The citation or reference information to which the requirement relates.	Defines what is considered to be an acceptable replacement for the Walmart protocol specification

PSC reserves the right to require testing for products where documents have been submitted in lieu of testing.

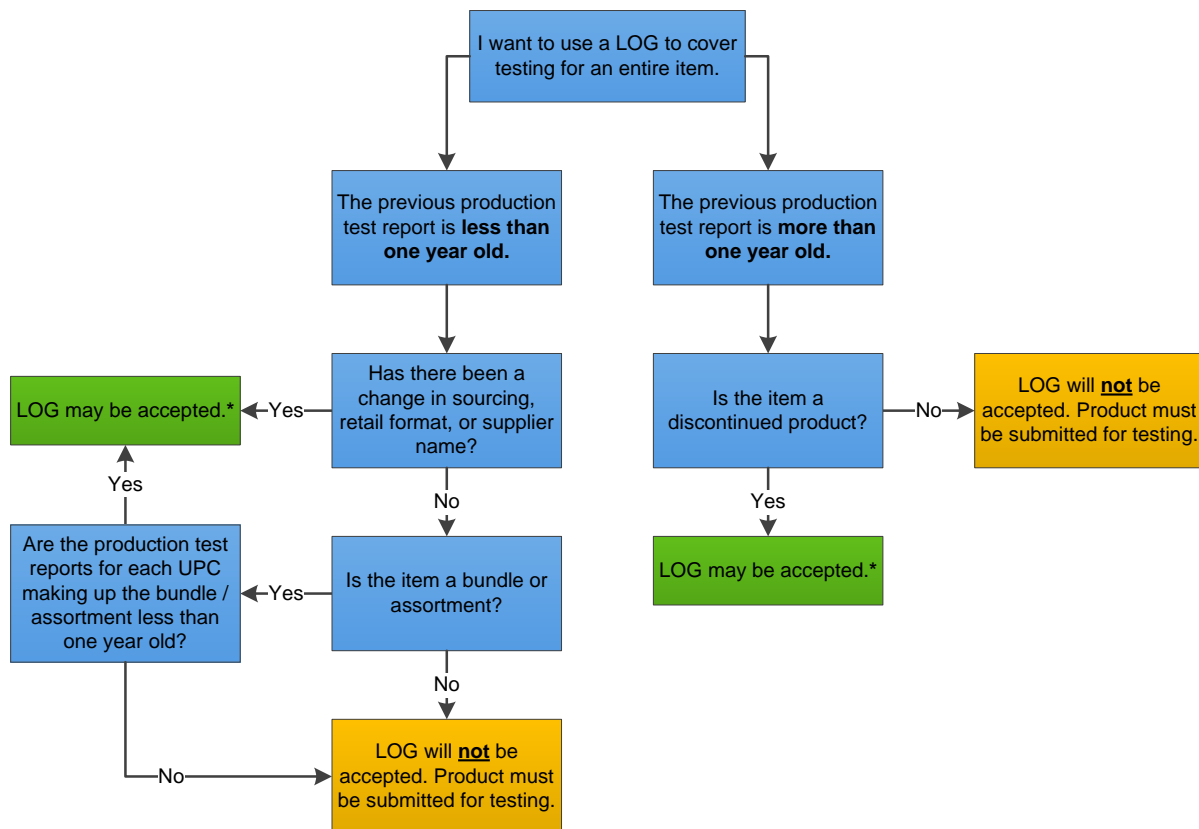
F. Letters of Guarantee (LOG)

1. Using LOG for an Entire Item

Letters of Guarantee can be applied in conjunction with the Document Acceptance List in the following situation(s) to cover testing for an entire item:

1. **Sourcing Change** – Product was previously carried as direct import and is being switched to domestic or vice versa. This does not apply to a change in factory.

2. **Retail Format Change** – Product is carried in Walmart under one UPC and/or item number, and it is now being added to Dotcom under another or vice versa (also applicable to products changing departments).
3. **Discontinued Item** – Product has been discontinued; there is residual inventory for sale; and the residual inventory is representative (i.e., produced at the same time, in the same factory, and using the same materials) of the product tested under the last production report.
4. **Supplier Name Change** – Product was tested under the previous supplier name, and the supplier has undergone a name change before the production test expires.
5. **Bundle / Assortment** – Product is a bundle / assortment under a single UPC and made up of products under various UPCs which have current production test reports or vice versa (e.g., dinnerware set under one UPC and individual dinnerware pieces under various UPCs).



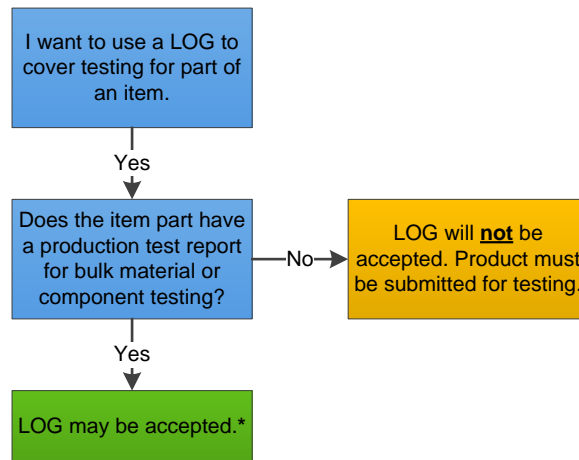
*Please refer to the LOG [General Requirements](#) for information on what must be certified. The lab may conduct a gap analysis to determine if there are any testing gaps and test for the gaps.

2. Using LOG for Part of an Item

Letters of Guarantee can be applied in conjunction with the Document Acceptance List in the following situation(s) to cover testing for part of an item:

1. **Bulk Material** – Product is composed of a material that has undergone bulk material testing (e.g., plush in comforter).

2. **Component** – Product is composed of a component that has undergone component testing (e.g., mechanical motor in blender, wheels on toy vehicles, doll hair, beads of the same color in activity kits).



*Please refer to the LOG [General Requirements](#) for information on what must be certified. The lab may conduct a gap analysis to determine if there are any testing gaps and test for the gaps.

3. General Requirements

Letters of Guarantee must include the following:

1. Drafted on supplier's company letterhead or include an e-verification of the origin of the LOG
2. Date
3. Product name, UPC, item number and description
4. Original test report number and test date, if applicable
5. Statement of guarantee certifying that the original test report provided applies to the product being shipped to Walmart, if applicable
6. Statement of guarantee certifying that the product is representative (i.e., produced at the same time, in the same factory, and using the same materials) of the product tested in the production report, if applicable
7. For products requiring a tracking method (e.g. children's products, wood products, etc.), indicate how the product can be linked to the test report (e.g. tracking label, lot code, etc.)
8. Signature of an officer of the company
 - For the purpose of letters of guarantee, an officer is a high-level management official with authority to act on behalf of the company
9. If applicable, a copy of the test report must be attached showing that:
 - Product was tested by a Walmart approved test laboratory and meets the Walmart testing/verification requirements, AND
 - Test report meets the Walmart product testing/verification program time frame

v. **Walmart US Quality Programs (Excluding Sam's Club and Walmart.com Exclusive Items)**

A. General Merchandise Testing

1. In-Store Performance Testing

For the General Merchandise (Non-Apparel) items "initial In-Store Quality Audit", all sizes and colorways representative of each style will be randomly pulled for testing as soon as the products are available in stores. Full testing will be conducted including color match testing.

It is the supplier's responsibility to inform Walmart at gmtechnical@wal-mart.com of any items that have been discontinued and should be removed from the In-Store testing program.

Walmart Private Brand items require quarterly In-Store testing unless otherwise specified by Walmart. All Non-Private Brands will be pulled from the store once a year.

Additional In-Store goods may be tested when the "initial In-Store Quality Audit" results in a test failure.

High Sampling Retest from multiple regions for Major or Minor failures will be at the direction of the Walmart Quality and Technical Team.

2. Reduced In-Store Testing (RIST) and Skip Pre-Production Testing (SKPPT)

Walmart rewards "Best in Class" suppliers for consistently providing quality products in our Private Label Brands with a reduction in the frequency of In-Store testing from quarterly to annually. The criteria for reduced In-Store testing are based on Walmart business requirements and supplier quality performance in the following areas:

- Product Withdrawals and Recalls
- Return Rate (RR)
- In-Store Testing

To be considered for participation, suppliers must meet the following requirements:

- Business requirements for product category align with In-Store testing reduction program
- No product withdrawals or recalls in the past fiscal year
- Return Rate (RR) compared to the category average
- In-Store Testing Fail Rate compared to the category average

Eligibility assessments will be conducted annually. New and continued participation in the In-Store testing reduction program will be based on supplier product quality performance for the previous year.

Note: Suppliers will be immediately dropped from the In-Store testing reduction program for any product withdrawal or recall.

Suppliers will be notified if they are eligible to participate in the program.

Suppliers approved for RIST are automatically approved for SKPPT. With the Skip Pre-Production Testing Program (SKPPT), Walmart Private Brand suppliers have the option to skip the Pre-Production testing portion of the Walmart General Merchandise Approval and Testing Process in the eligible category.

If suppliers “opt-in” to SKPPT, they are not required to perform Pre-Production testing. (Samples for PD/Buyer aesthetic review may still be requested). SKPPT allows suppliers to go directly to Production testing.

It is highly recommend that suppliers still elect to take advantage of Pre-Production or Vendor Only Testing to Walmart requirements in order to prevent potential shipment delays or PO cancellations due to a failed Production test.

Suppliers must complete the SKPPT Form with Instructions and submit it along with the Production test request form and samples.

[CONTINUED ON NEXT PAGE]

Walmart.Com Online Exclusive Product Approval Process

Walmart US General Merchandise Online Exclusive items (Excludes Apparel)
(Scope for Limited Testing: Dept 14,16,17,18,20,22,71,72,74. Contact Tech for Updates.)

1. Any Item that is Private Brand and/or Direct Import:

1	Product Development Approval	<p>Samples are to be submitted directly to the Product Development contact, along with a Sample Tag attached. Only AFTER receiving PD approval, the Supplier may send samples to the Lab for testing. (Note: for Direct Import Production Testing, follow the Sample Sealing process.)</p>											
2	Production Testing (Note: Pre-production Testing is not required for Online Exclusive Items.)	Production Limited Testing Details	<p>Note: Existing 3rd Party Lab test reports dated within 1 year MAY be accepted for the Production Test requirement. For example, a valid Preproduction Test report WITH Compliance testing included (Supplier must request this). The test report, sample, and Letter of Guarantee (LOG) stating no changes have occurred, must be submitted to a Lab approved by Walmart for the Department in question. The Lab will determine if current requirements have been satisfied. Additional testing and/or documentation may be required. Contact the appropriate Lab for details.</p> <table border="1" style="width: 100%; border-collapse: collapse;"> <tr> <td style="width: 30%; vertical-align: top;"> <ul style="list-style-type: none"> • Non-Electric Items in any Department except D71, D16. </td> <td style="width: 40%; vertical-align: top;"> <p>Commitment Quantity of 1000 pieces or Less: Production - Limited testing*</p> <p>Commitment Quantity Greater than 1000 pieces: Production - Full testing</p> </td> <td style="width: 30%;"></td> </tr> <tr> <td style="vertical-align: top;"> <ul style="list-style-type: none"> • Electric Items <i>without</i> an A/C plug (low voltage cables, etc). • Battery powered items (except Li-Ion powered). </td> <td style="vertical-align: top;"> <p>Commitment Quantity of 800 pieces or Less: Production - Limited testing*</p> <p>Commitment Quantity Greater than 800 pieces: Production - Full testing</p> </td> <td></td> </tr> <tr> <td style="vertical-align: top;"> <ul style="list-style-type: none"> • Electric Items <i>with</i> an A/C plug. • Li-Ion powered items. • All D71, D16 items. </td> <td style="vertical-align: top;"> <p>Commitment Quantity 500 pieces or Less: Production - Limited testing*</p> <p>Commitment Quantity Greater than 500 pieces: Production - Full testing</p> </td> <td></td> </tr> </table> <p>Direct Import Production Test samples must be pulled and sealed per the Walmart US Sample Sealing Process. Contact your Global Sourcing Representative for more information on this process.</p> <ol style="list-style-type: none"> 1. Complete the 3rd Party Laboratory test request form (TRF). 2. Submit the required test samples (contact the Lab for number of samples). Test samples must include a Sample Tag or a Product Specification/BOM. 		<ul style="list-style-type: none"> • Non-Electric Items in any Department except D71, D16. 	<p>Commitment Quantity of 1000 pieces or Less: Production - Limited testing*</p> <p>Commitment Quantity Greater than 1000 pieces: Production - Full testing</p>		<ul style="list-style-type: none"> • Electric Items <i>without</i> an A/C plug (low voltage cables, etc). • Battery powered items (except Li-Ion powered). 	<p>Commitment Quantity of 800 pieces or Less: Production - Limited testing*</p> <p>Commitment Quantity Greater than 800 pieces: Production - Full testing</p>		<ul style="list-style-type: none"> • Electric Items <i>with</i> an A/C plug. • Li-Ion powered items. • All D71, D16 items. 	<p>Commitment Quantity 500 pieces or Less: Production - Limited testing*</p> <p>Commitment Quantity Greater than 500 pieces: Production - Full testing</p>	
<ul style="list-style-type: none"> • Non-Electric Items in any Department except D71, D16. 	<p>Commitment Quantity of 1000 pieces or Less: Production - Limited testing*</p> <p>Commitment Quantity Greater than 1000 pieces: Production - Full testing</p>												
<ul style="list-style-type: none"> • Electric Items <i>without</i> an A/C plug (low voltage cables, etc). • Battery powered items (except Li-Ion powered). 	<p>Commitment Quantity of 800 pieces or Less: Production - Limited testing*</p> <p>Commitment Quantity Greater than 800 pieces: Production - Full testing</p>												
<ul style="list-style-type: none"> • Electric Items <i>with</i> an A/C plug. • Li-Ion powered items. • All D71, D16 items. 	<p>Commitment Quantity 500 pieces or Less: Production - Limited testing*</p> <p>Commitment Quantity Greater than 500 pieces: Production - Full testing</p>												
3	Final Inspection	Direct Import Items must undergo Final Inspection before shipping. Contact your Global Sourcing representative for more information on this process. Note: Modrn and Flower brands are exempt from Final Inspection.											

***NOTE: Production-Limited testing includes all Regulatory, Compliance, and select Quality requirements.**

2. Any item that is BOTH Non-Private Brand and Non-Direct Import:

1	Product Development Approval	Product Development and/or Buyer approval as designated.
2	Production Testing	Supplier ensures compliance to requirements and must provide documentation if requested.

Figure 2